



# Parcour Trail - Working Equitation

14.5. / 17.5.2015

Pferdinternational München - Riem

WE-M & Master Class (WE-S):

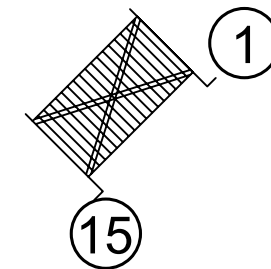
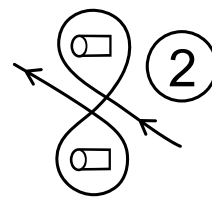
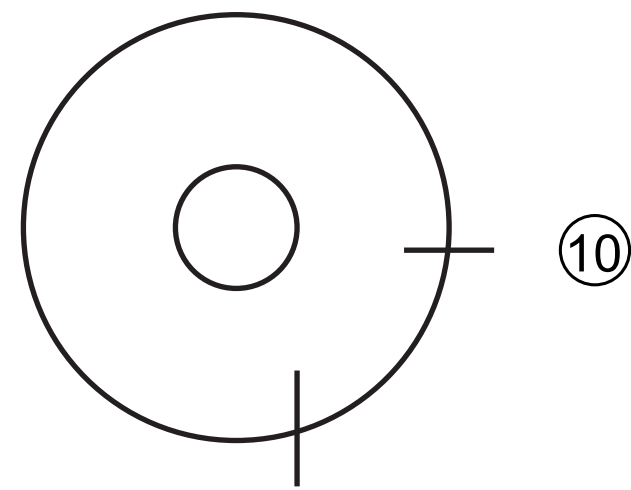
Trail & Speedtrail

Ease of Handling & Speed Trial

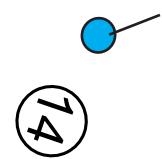
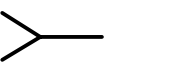
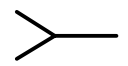
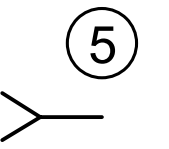
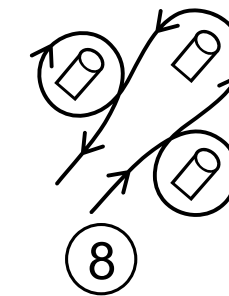
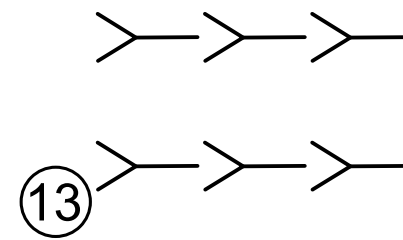
Start

1. Gate
2. figure eight between drums
3. Bridge
4. Sidepass to right
5. Slalom between parallel posts
6. Jumping
7. Bell at end of corridor
8. Drums
9. Bridge

10. Pferch first right Hand, second left hand
  11. Sidepass to left
  12. Slalom between posts in a stright line
  13. switching a glass from the tip of a pole
  14. Removing a pole from a drum  
Using a pole to skewering a ring  
Placing a pole in a drum
  15. gate
- Finish



Start  
Ziel



Garrocha ●

